

ATS V6 - MetaTrader 4 Installation / Troubleshooting Guide

Hello and welcome to Trade ATS!

This is our help doc for installing ATS onto the MetaTrader 4 Platform. Please follow the steps below for an easy and trouble-free installation. The steps are very detailed so make sure you read through every one.

You can also follow along on video by visiting the following link:

<https://www.tradeats.com/installation-tutorial>

Before you start:

- If you are using a MAC OS, please be sure to download Parelles first. This will allow you to run the Windows OS on your Mac. You need to be able to run full Windows 8, 10 or 11 on your MAC in order to use MetaTrader 4 and ATS software. The online version of MT4 will not work.
- If you need additional help, feel free to reach out to us at support@tradeats.com.

Here are the step-by-step instructions:

(If you already have your MT4 account and have the platform up and running, you can skip to step 4)

Step 1: Download Metatrader 4 (Not 5)

Download the MetaTrader 4 Platform from the broker of your choice and open a live or demo account with that broker. Please take care to make sure you select MetaTrader 4 and not 5. MT5 will not work with this ATS version.

We do not recommend any particular broker over another, but good options are Forex.com or Oanda since they are under highly-regulated jurisdictions. Do your own research as to which broker you would like to select.

Step 2: Get Your Account Information

Once you have completed step 1, you will need to locate your MT4 account information. This is the information needed to connect to your brokerage account, real or demo.

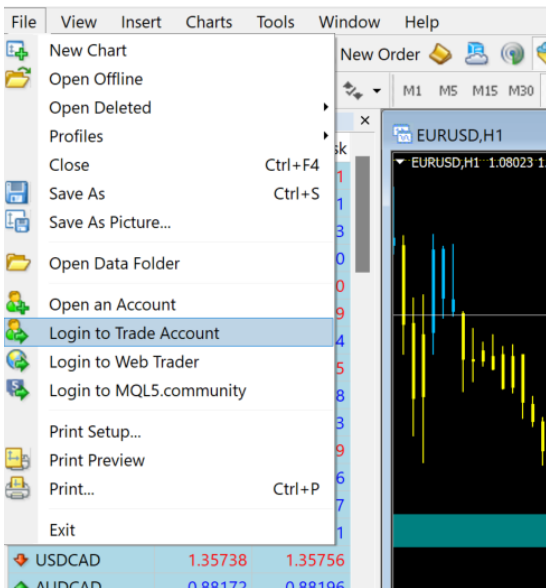
You will need:

- Your account number
- Your password
- Your server name

If you have opened a new demo account, this information will typically be provided in an email from your broker. If you have opened a live account, you should be able to locate this information inside your brokerage's online client terminal. If you cannot find it, please contact your broker's support for further instructions.

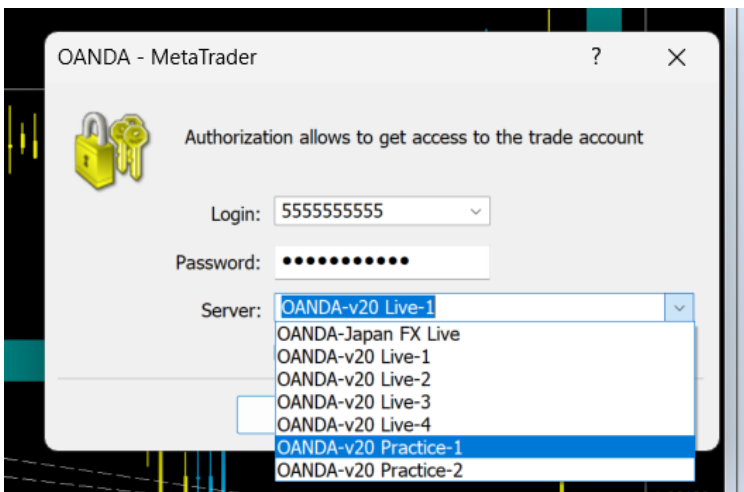
Step 3:

Once you have located your account information, you can log into your account by either following the login prompts if you have just downloaded MT4, or by locating the “File” button at the top left of the platform, and then navigating down to “Log in to Trade Account” button.



You will then need to enter your account number, password, and server name.

Make sure the server selected is the EXACT server listed for your account. (Sometimes there can be different server names and numbers for the same broker.)



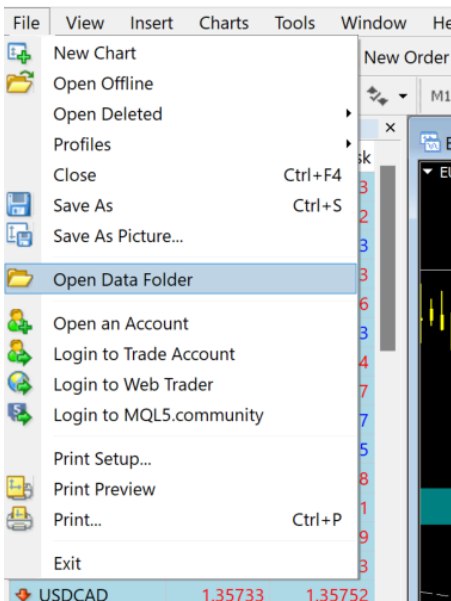
If your account was successfully logged in, you should see that there is a data connection at the bottom right of the MT4 platform.



Step 4:

Once you have logged into your trading account, you can begin the software installation process.

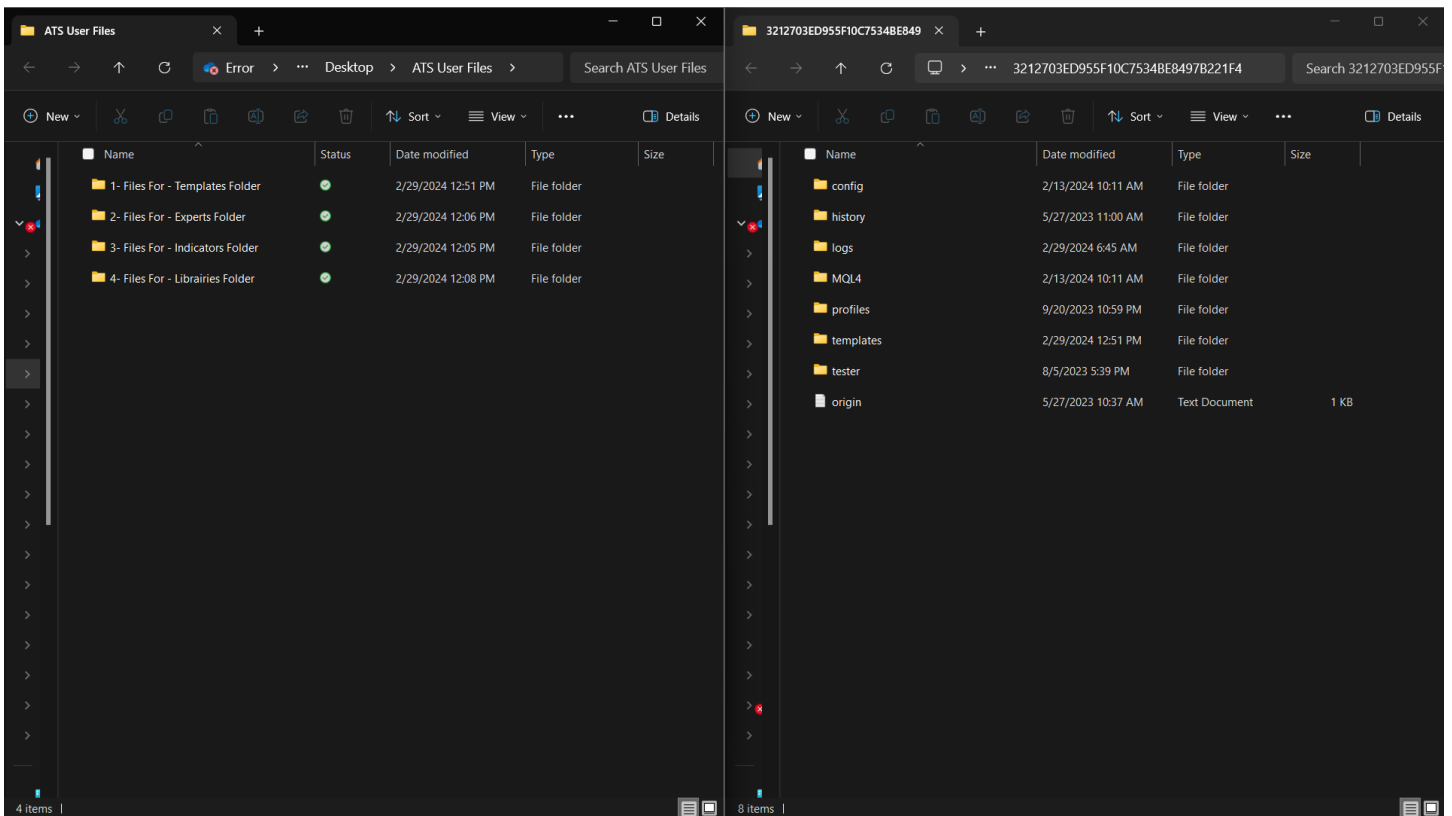
First, you will need to open the MT4 data folder. You can find this folder by navigating to the “File” tab at the top left of the MT4 platform, and then locating the “Data Folder” tab.



At this point, you need to get ready to drag and drop all of the ATS files into the folders where they need to go. Here is how you should do this to keep it easy and organized.

If you are reading this help doc directly from the install pack, you have already opened the ATS install pack and should be ready to transfer files. If you are reading this from somewhere else, you will need to find the latest ATS download pack that was emailed to you when you signed up, or download it from the support section in our website.

Put both, the ATS software pack folder (left) and the MT4 data folder (right) next to each other like the following illustration.



Step 5:

You will now need to start dragging and dropping the ATS files where they need to go.

The folders are numbered in the order in which you should install them, and labeled to reflect the folder name those files go to.

Here is the exact sequence to follow:

- Open “1- Files For - Templates Folder” in the ATS download pack (left) > locate the “Templates” folder (right) > drag and drop all ATS file contents (left) to the “Templates” folder (right) > go back one step out of the “templates” folder (right), back to where you started > go back one step out of the “1- Files For - Templates Folder” (left), back to the main ATS file folder.
- Open “2- Files For - Experts Folder” in the ATS download pack (left) > Locate the “MQL4” folder (right) > Drag and drop all “2- Files For - Experts Folder” contents (left) to the “Experts” folder (right) > go back one step out of the “Experts” folder (right), back to MQL4 folder > go back one step out of the “2- Files For - Experts Folder” (left), back to the main ATS file folder.

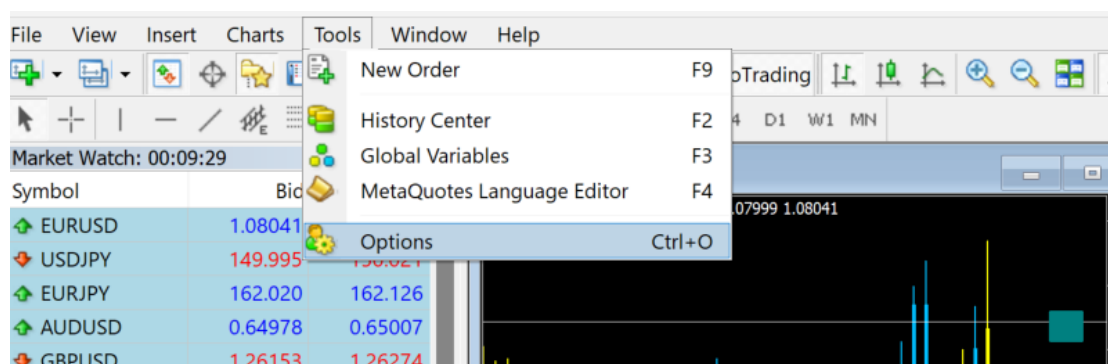
- Open “3- Files For - Indicators Folder” in the ATS download pack (left) > Locate the “Indicators” folder (right) > Drag and drop all “3- Files For - Indicators Folder” contents (left) to the “Indicators” folder (right) > go back one step out of the “Indicators” folder (right), back to MQL4 folder > go back one step out of the “3- Files For - Indicators Folder” (left), back to the main ATS file folder.
- Open “4- Files For - Libraries Folder” in the ATS download pack (left) > Locate the “Libraries” folder (right) > Drag and drop all “4- Files For - Libraries Folder” contents (left) to the “Libraries” folder (right)

You are done placing ATS files! Now you need to close out all folders and close down your Metatrader 4 platform completely, then re-open it. This will allow the new indicator updates to take effect inside your system.

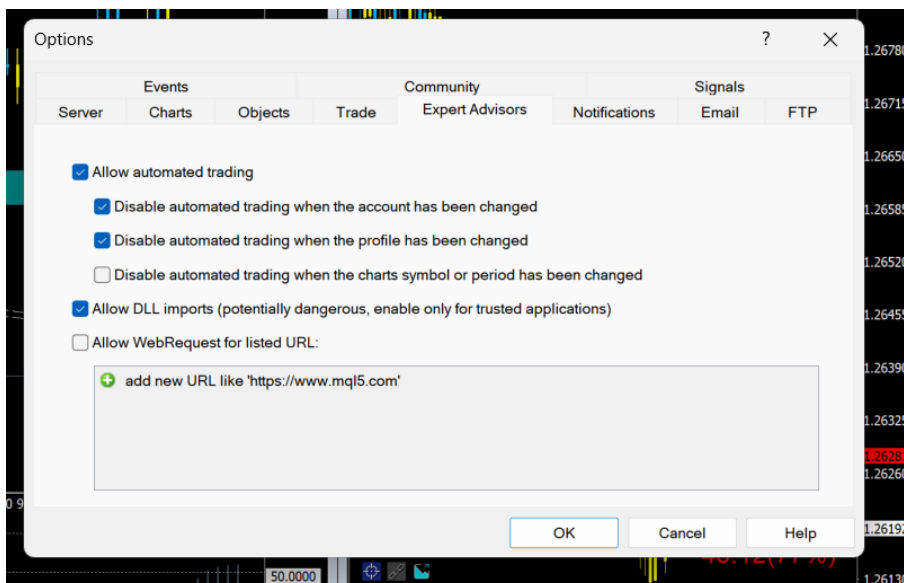
Step 6:

You will now need to enable DLL imports inside your MT4 platform in order for the software to communicate with our servers and work correctly.

Start by locating the “Tools” menu option at the top right of your platform. Then navigate to the “options” tab.

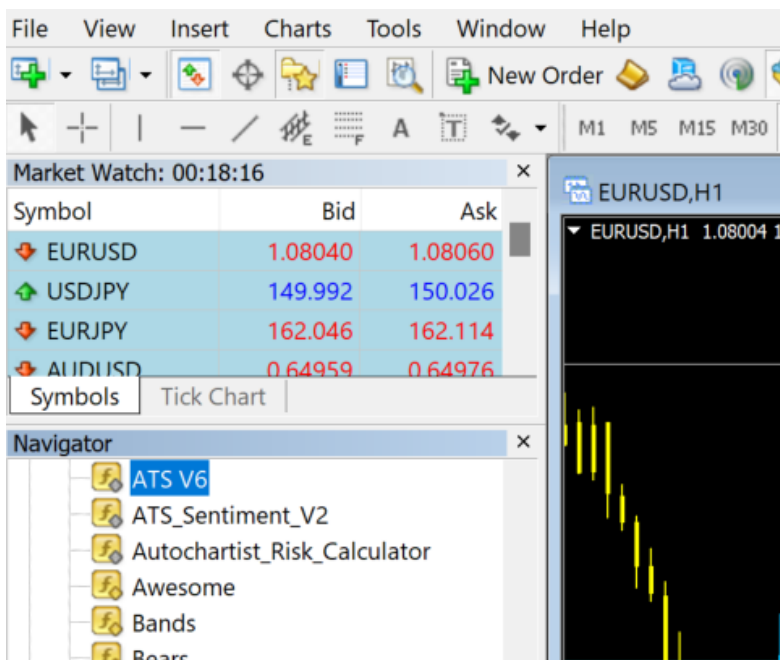


Once the options menu has opened, locate the “Expert Advisors” tab, and then check the box that says “Allow DLL imports”. Press “OK” when done.



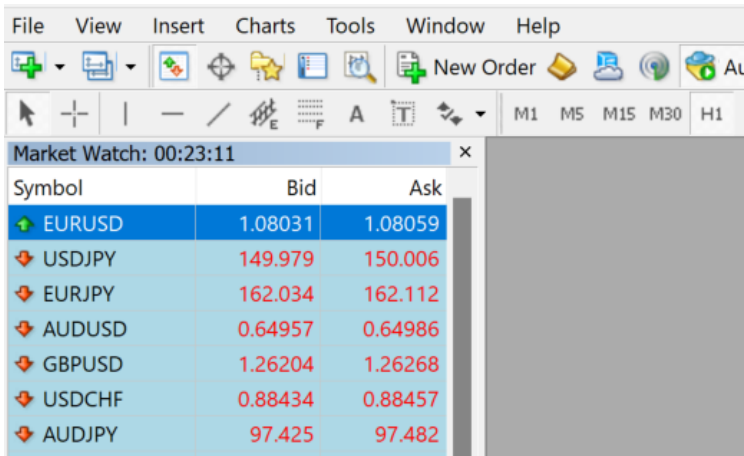
Step 7:

You will now be able to apply ATS software to your charts by opening the navigator window (folder icon in the toolbar), locating the indicator folder, and dragging and dropping the ATS indicators onto a chart.



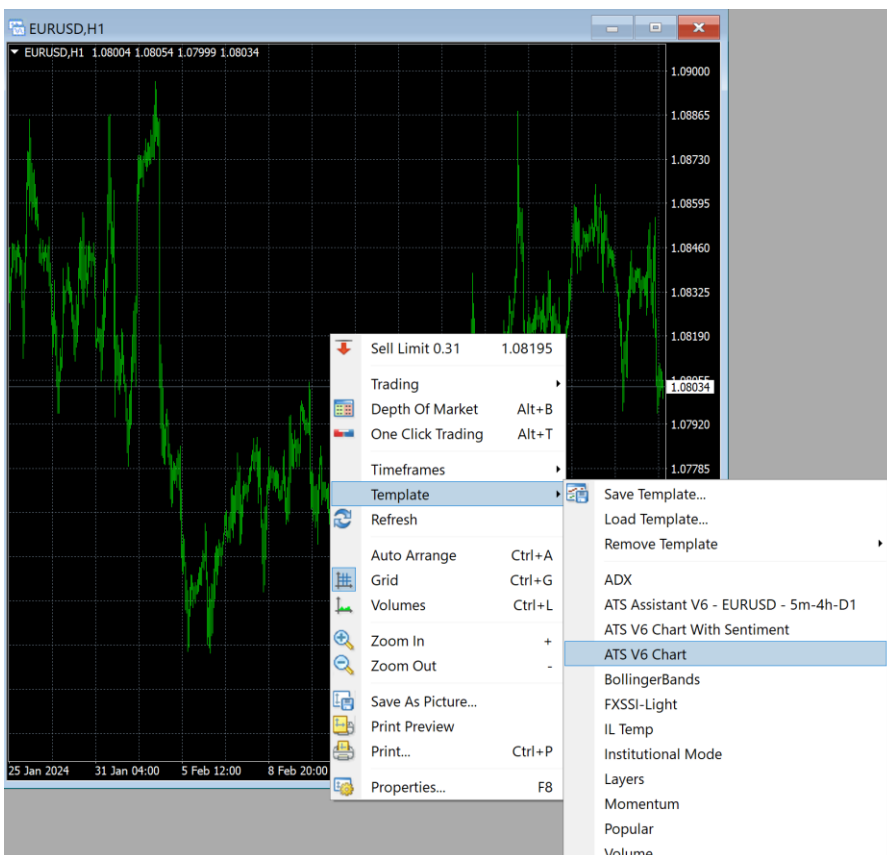
If you scroll down a bit further in the navigator window, you will also see the “Expert Advisors” folder. In that folder, you will find the ATS Assistant. You can drag and drop it onto a chart to begin using it as well. We recommend that you size up and maximize the chart for the best Assistant dashboard view.

You can also load ATS by dragging and dropping a new chart from the market watch window, onto the platform canvas.



Symbol	Bid	Ask
EURUSD	1.08031	1.08059
USDJPY	149.979	150.006
EURJPY	162.034	162.112
AUDUSD	0.64957	0.64986
GBPUSD	1.26204	1.26268
USDCHF	0.88434	0.88457
AUDJPY	97.425	97.482

Then right-click on that chart, navigate to templates, and choose one of the ATS templates that have been preloaded into the system. We suggest starting with the basic ATS V6 Chart Template.



If you are experienced with MT4, you are welcome to construct your own templates and save them.

That is it! You are ready to trade! Now it is time to dig into our online courses and learn exactly how to use all of the ATS software products.

Troubleshooting Guide

If you are having problems with your ATS software not working, please consider the following problems and solutions.

Problem: My software is not inside the indicator folders.

Solution: Make sure you have accurately placed each and every file where it needs to go. You can make sure everything is correct by revisiting steps 4 through 6 above.

Problem: My software says my subscription has expired and won't load.

Solution: This is likely because of either a server issue or because your payment has become delinquent. If your payment is up to date, please let us know and we will look into your issue further.

Problem: My charts won't come up at all and the platform won't load. It says no connection in the bottom right corner.

Solution: This is likely because you are not fully logged into your account. You will need to locate your account number, password, and server information from your broker. This is usually contained in an email sent to you if you were using a demo account. If your account is real, you can obtain this information by logging into your brokerage terminal on their website.

Problem: My templates won't load.

Solution: Sometimes there can be issues with templates depending on the instance of MT4 and how your computer is set up. In this case, you would manually want to apply the ATS indicators onto a chart, set all of the colors and options how you would like, and then right-click on that chart, go to templates, then save template, and then save your own template.

